

BOAT HOUSE BULLETIN®



A Factual Report from Mercury Marine

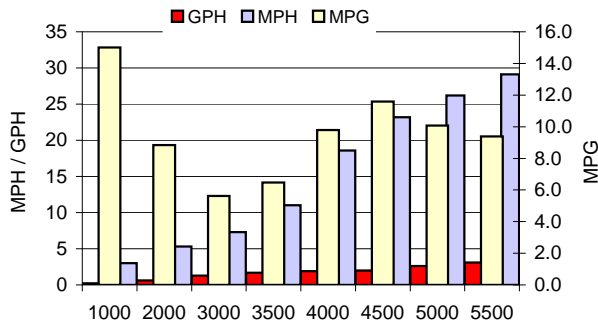
TEST CONDITIONS

Test Date	11/6/2012
Test Conductors	MS/RM
Boat Weight as Tested (pounds)	N/A
Air Temperature (degrees Fahrenheit)	60
Elevation (feet)	1833
Wind Velocity (MPH)	0-5
Fresh/Salt Water	Fresh
Fuel Level at Testing (gallons)	3

PERFORMANCE SUMMARY

Top Speed (MPH @ RPM)	33 @ 6000
Acceleration 0 - 20 MPH (Seconds)	7.7
Acceleration 0 - 30 MPH (Seconds)	16
Best Fuel Efficiency (MPG @ MPH)	9.8 @ 18.6

PERFORMANCE CURVE



PERFORMANCE DATA

RPM	SPEED	FUEL	FUEL
RANGE	MPH	GPH	MPG
1000	3	0.2	15.0
2000	5.3	0.6	8.8
3000	7.3	1.3	5.6
3500	11	1.7	6.5
4000	18.6	1.9	9.8
4500	23.2	2	11.6
5000	26.2	2.6	10.1
5500	29.1	3.1	9.4
6000	33	3.6	9.2

ENGINE SPECIFICATIONS

Engine	40ELPT
Horsepower	40
Cylinders	3
Gear Ratio	2.00:1
Model Number	

BOAT SPECIFICATIONS

Boat LOGO	
Manufacturer	Alumaweld
Website	www.alumaweldboats.com
Boat Model	16 Sport Skiff
Bottom Style/Paint	Modified V
Material	Aluminum
Length	16' 2"
Beam	77"
Transom Height (inches)	20
Transom Angle (degrees)	13
Max HP Capacity	40
Fuel Tank Capacity (gallons)	17
Steering Type	Tiller Handle
Dry Boat Weight (pounds)	740
Mounting Bolt Hole (outboard)	#2

PROPELLER SPECIFICATIONS

Part Number (Right Hand)	48-73136A45
Part Number (Left Hand)	
Mercury Name	Black Max
Material	Aluminum
Diameter/Pitch	10 3/8 X 13
Number of Blades	3
M/C Bravo Three Propeller	
Part Number (Forward)	n/a
Part Number (Rear)	n/a

MERCURY MARINE PO BOX 1939 FOND DU LAC, WISCONSIN 54936-1939

©2012 Mercury Marine, All Rights Reserved. Results on individual boats may vary depending on many factors, including weather and the condition of propeller, lower unit and boat bottom. Boat information based on manufacturer's published specifications.

800-MERCURY MERCURYMARINE.COM