

BOAT HOUSE BULLETIN®



A Factual Report from Mercury Marine

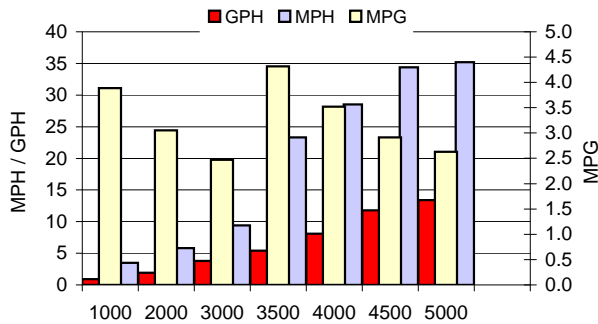
TEST CONDITIONS

Test Date	11/5/2012
Test Conductors	MS/RM
Boat Weight as Tested (pounds)	N/A
Air Temperature (degrees Fahrenheit)	60
Elevation (feet)	1833
Wind Velocity (MPH)	0-5
Fresh/Salt Water	Fresh
Fuel Level at Testing (gallons)	30

PERFORMANCE SUMMARY

Top Speed (MPH @ RPM)	35.2 @ 5000
Acceleration 0 - 20 MPH (Seconds)	5.9
Acceleration 0 - 30 MPH (Seconds)	8.4
Best Fuel Efficiency (MPG @ MPH)	4.3 @ 23.3

PERFORMANCE CURVE



PERFORMANCE DATA

RPM	SPEED	FUEL	FUEL
RANGE	MPH	GPH	MPG
1000	3.5	0.9	3.9
2000	5.8	1.9	3.1
3000	9.4	3.8	2.5
3500	23.3	5.4	4.3
4000	28.5	8.1	3.5
4500	34.4	11.8	2.9
5000	35.2	13.4	2.6

ENGINE SPECIFICATIONS

Engine	150 EFI
Horsepower	150
Cylinders	4
Gear Ratio	N/A
Model Number	

BOAT SPECIFICATIONS

Boat LOGO	
Manufacturer	Alumaweld
Website	www.alumaweldboats.com
Boat Model	21 Super V - Blue-Gray
Bottom Style/Paint	Shallow Water V
Material	Aluminum
Length	21' 5"
Beam	98"
Transom Height (inches)	25
Transom Angle (degrees)	13
Max HP Capacity	Prop/Jet 250/175
Fuel Tank Capacity (gallons)	37
Steering Type	Big Tiller
Dry Boat Weight (pounds)	1850
Mounting Bolt Hole (outboard)	#3

PROPELLER SPECIFICATIONS

Part Number (Right Hand)	n/a
Part Number (Left Hand)	n/a
Mercury Name	n/a
Material	n/a
Diameter/Pitch	n/a
Number of Blades	Specialty AR Jet Pump
M/C Bravo Three Propeller	
Part Number (Forward)	n/a
Part Number (Rear)	n/a

MERCURY MARINE PO BOX 1939 FOND DU LAC, WISCONSIN 54936-1939

©2012 Mercury Marine, All Rights Reserved. Results on individual boats may vary depending on many factors, including weather and the condition of propeller, lower unit and boat bottom. Boat information based on manufacturer's published specifications.

800-MERCURY MERCURYMARINE.COM